

Neurology for the PCP

FRIDAY, OCT. 29 • DETROIT MARRIOTT TROY

DESCRIPTION

This conference is geared toward primary care partners. The key objective is to help the primary care provider identify neurological symptoms and treatment options.

TARGET AUDIENCE

Physicians, physician assistants, nurses, nurse practitioners, physical and occupational therapists, allied health, residents, fellows and medical students in the specialties of family medicine, internal medicine and pediatrics.

OBJECTIVES

At the conclusion of this activity, learners should be better able to:

- identify signs and symptoms associated with specific neurologic disorders
- explain treatment options for patients with neurological symptoms
- instruct participants on guidelines for patient referral
- describe follow up recommendations to reduce readmissions

FACULTY DISCLOSURE

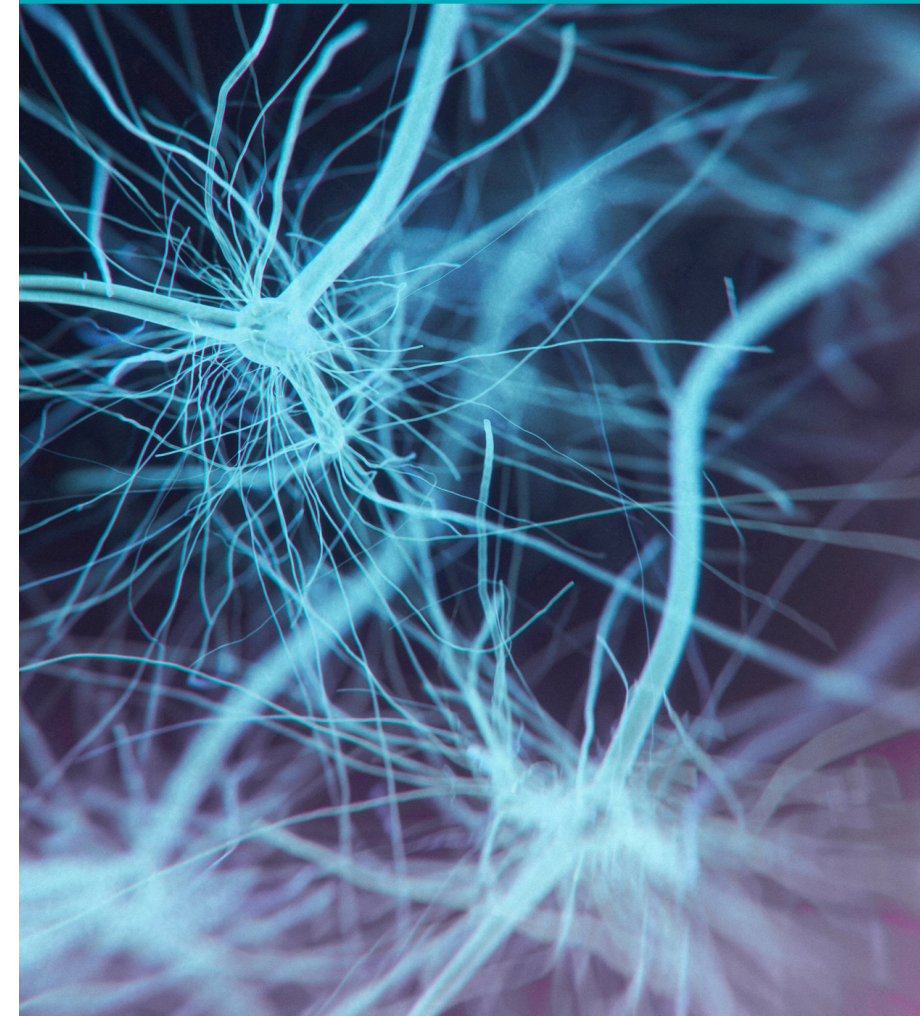
All speakers and members of the planning committee have been asked to disclose any relevant relationships they may have with commercial interests. The presence or absence of relationships will be disclosed at the time of the meeting.

CME ACCREDITATION

This activity is approved for *AMA PRA Category 1 Credits™*, *AOA Category 1-A credits* and *ANCC Nursing Contact Hours*.

For more information, including amount of credit available, visit beaumont.cloud-cme.com/neuropcp2021

NON-PROFIT ORG
U.S. POSTAGE
PAID
PERMIT NO 404
ROYAL OAK
MICHIGAN



Beaumont

Neuroscience Center
3555 West 13 Mile Road, Suite N120
Royal Oak, MI 48073

**Neurology
for the PCP**

**FRIDAY, OCT. 29
DETROIT MARRIOTT TROY**

P629e1_24144_000721

Neurology for the PCP

(Primary Care Partners)

Care and management of the neurology patient
for primary care and pediatric physicians

**FRIDAY, OCT. 29
DETROIT MARRIOTT TROY**

Beaumont

FACULTY AND PLANNING COMMITTEE*

*Activity Director, Daniel Menkes, M.D.

Neurology Health System Chair
Beaumont Hospital, Royal Oak
Professor OUWB School of Medicine

M. Mazen Al-Hakim, M.D.

Neurology
Beaumont Hospital, Troy
Assistant Professor
Neurology OUWB School of Medicine

Anna Aljassem, M.D.

Physical Medicine and Rehabilitation
Beaumont Hospital, Royal Oak
Assistant Professor, PM&R
OUWB School of Medicine

Daniel Arndt, M.D.,

Pediatric Neurology Chief
Beaumont Hospital, Royal Oak
Associate Professor, Pediatrics with
secondary in Neurology
OUWB School of Medicine

Lauren Aymen, D.O.

Neurology
Beaumont Hospital, Royal Oak Instructor,
Neurology
OUWB School of Medicine

Tarif Bakdash, M.D.

Pediatric Neurology
Beaumont Hospital, Royal Oak Professor,
Pediatrics
OUWB School of Medicine

Jonathan Fellows, D.O.

Neurology
Beaumont Hospital, Royal Oak
Assistant Professor, Neurology
OUWB School of Medicine

Rebecca Grysiewicz, D.O.

Neurology
Beaumont Hospital, Royal Oak
Assistant Professor, Neurology
OUWB School of Medicine

Meghan Harper-Shankie, M.D.

Pediatrics
Beaumont Hospital, Royal Oak Instructor,
Pediatrics
OUWB School of Medicine

Suleiman Kojan, M.D.

Neurology
Beaumont Hospital, Royal Oak
Associate Professor, Neurology OUWB
School of Medicine

Adam Kuhlman, D.O.

Neurology
Beaumont Hospital, Royal Oak
Assistant Professor, Neurology OUWB
School of Medicine

Elizabeth Leleszi, M.D.

Pediatrics
Beaumont Hospital, Royal Oak
Assistant Professor, Neurology
OUWB School of Medicine

Heather Little, D.O.

Pediatrics
Beaumont Hospital,
Royal Oak Instructor, Pediatrics
OUWB School of Medicine

*Anne Marie Michon, N.P.

Pediatrics
Beaumont Hospital, Royal Oak

Meera Patel, M.D.

Pediatrics
Beaumont Hospital, Royal Oak

Alexa Shaw, M.D.

Pediatrics
Beaumont Hospital, Royal Oak

*Lori Sheridan, B.B.A.

Neuroscience Outreach Coordinator
Beaumont Hospital, Royal Oak

Daniel Singer, D.O.

Neurology
Beaumont Hospital, Dearborn
Instructor, Neurology
OUWB School of Medicine

Andrew Zillgitt, D.O.

Neurology
Beaumont Hospital, Royal Oak
Associate Professor, Neurology
OUWB School of Medicine

AGENDA

7:30–7:40 a.m.	WELCOME Daniel Menkes, M.D.
7:40–8:05 a.m.	Acute Stroke M. Mazen Al-Hakim, M.D.
8:05–8:30 a.m.	Cryptogenic Stroke Rebecca Grysiewicz, D.O.
8:30–8:50 a.m.	Stroke Panel Discussion Moderator: Daniel Singer, D.O. M. Mazen Al-Hakim, M.D. and Rebecca Grysiewicz, D.O.
8:50–9:30 a.m.	Adult Dementia Jonathan Fellows, D.O.
9:30–9:50 a.m.	BREAK
9:50–10:15 a.m.	Pediatric Movement Disorders Tarif Bakdash, M.D.
10:15–10:40 a.m.	Non-motor Symptoms and Parkinson's Disease Adam Kuhlman, D.O.
10:40–11:05 a.m.	Coordination of Care in the Pediatric Neuromuscular Patient Meghan Harper-Shankie, M.D.
11:05–11:30 a.m.	Adult Neuromuscular Daniel Menkes, M.D.
11:30 a.m.–12 p.m.	Neuropathic Pain Management Annas Aljassem, M.D.
12–1 p.m.	LUNCH
1–1:25 p.m.	Overview of Sleep Problems in Adults and Children Meera Patel, M.D.
1:25–1:50 p.m.	Pediatric Headache Management Elizabeth Leleszi, M.D.
1:50–2:15 p.m.	Advancements in Treating Migraine Lauren Aymen, D.O.
2:15–2:35 p.m.	Headache Panel Discussion Moderator: Daniel Arndt, M.D. Elizabeth Leleszi, M.D. and Lauren Aymen, D.O.
2:35–2:55 p.m.	BREAK
2:55–3:20 p.m.	Primary Care Approach for the New Onset of Seizure (Pediatric) Alexa Shaw, M.D.
3:20–3:45 p.m.	Seizures vs. Epilepsy - Identification and Management (Adult) Andrew Zillgitt, D.O.
3:45–4:10 p.m.	Multiple Sclerosis – Identification and Treatment Options Suleiman Kojan, M.D.
4:10–4:35 p.m.	Evaluation and Management of the Pediatric Patient with Neurofibromatosis Heather Little, D.O.
4:35–4:45 p.m.	CLOSING REMARKS Daniel Menkes, M.D.

The agenda and number of credits available are subject to change.

Neurology for the PCP

FRIDAY, OCT. 29 • DETROIT MARRIOTT TROY

REGISTRATION LINK

<https://beaumont.cloud-cme.com/neuropcp2021>

REGISTRATION FEES

	Early Bird Rate On or before 10/03/21	Regular Rate Between 10/04/21 and 10/26/21	Late Rate Between 10/27/21 and 10/28/21
Beaumont Physician	\$125	\$150	\$170
Non-Beaumont Physician	\$150	\$175	\$195
Nurse Practitioner (NP), Physician Assistant (PA), Resident and Fellow	\$100	\$125	\$145
Nurse and Allied Health	\$75	\$100	\$120
Non-OUWB Medical Student	\$50	\$60	\$80
OUWB Medical Student	\$40	\$50	\$70

Cancellations or refund requests must be received by October 26.

A processing fee of \$25 will be assessed to all cancelled registrations.

Cancellation and refund requests after October 26 will not be honored.

To cancel a registration, please send an email to cme@beaumont.edu with "Cancellation" in the subject line.

On-site/day of registration is not available.

QUESTIONS

CME related questions: contact cme@beaumont.edu

Event related questions: contact Lori Sheridan at 248-551-2309
or lori.sheridan@beaumont.org

Registration questions: contact cme@beaumont.edu

Beaumont is committed to making its activities accessible to all individuals. If you are in need of a special accommodation, please do not hesitate to contact us.

Beaumont